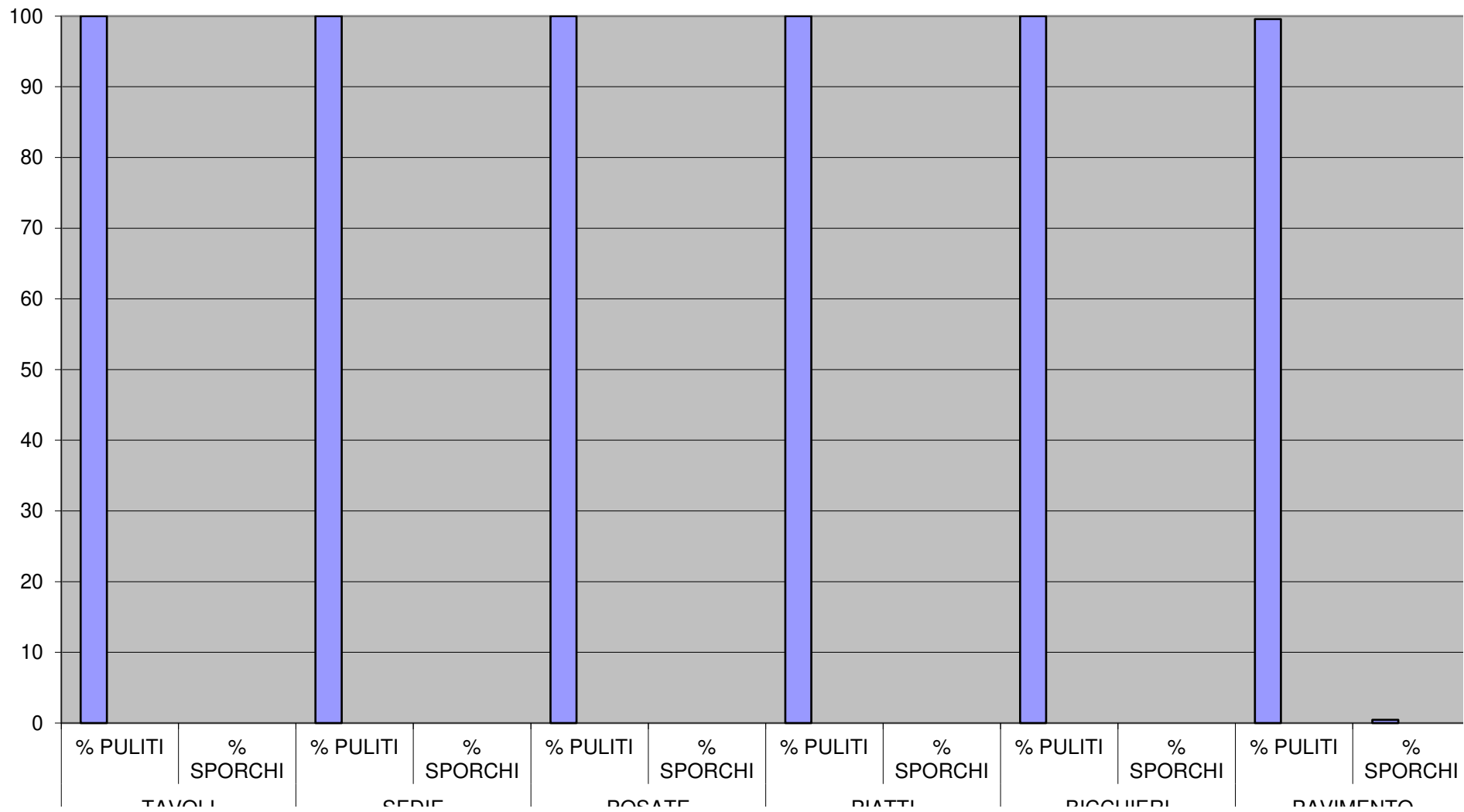
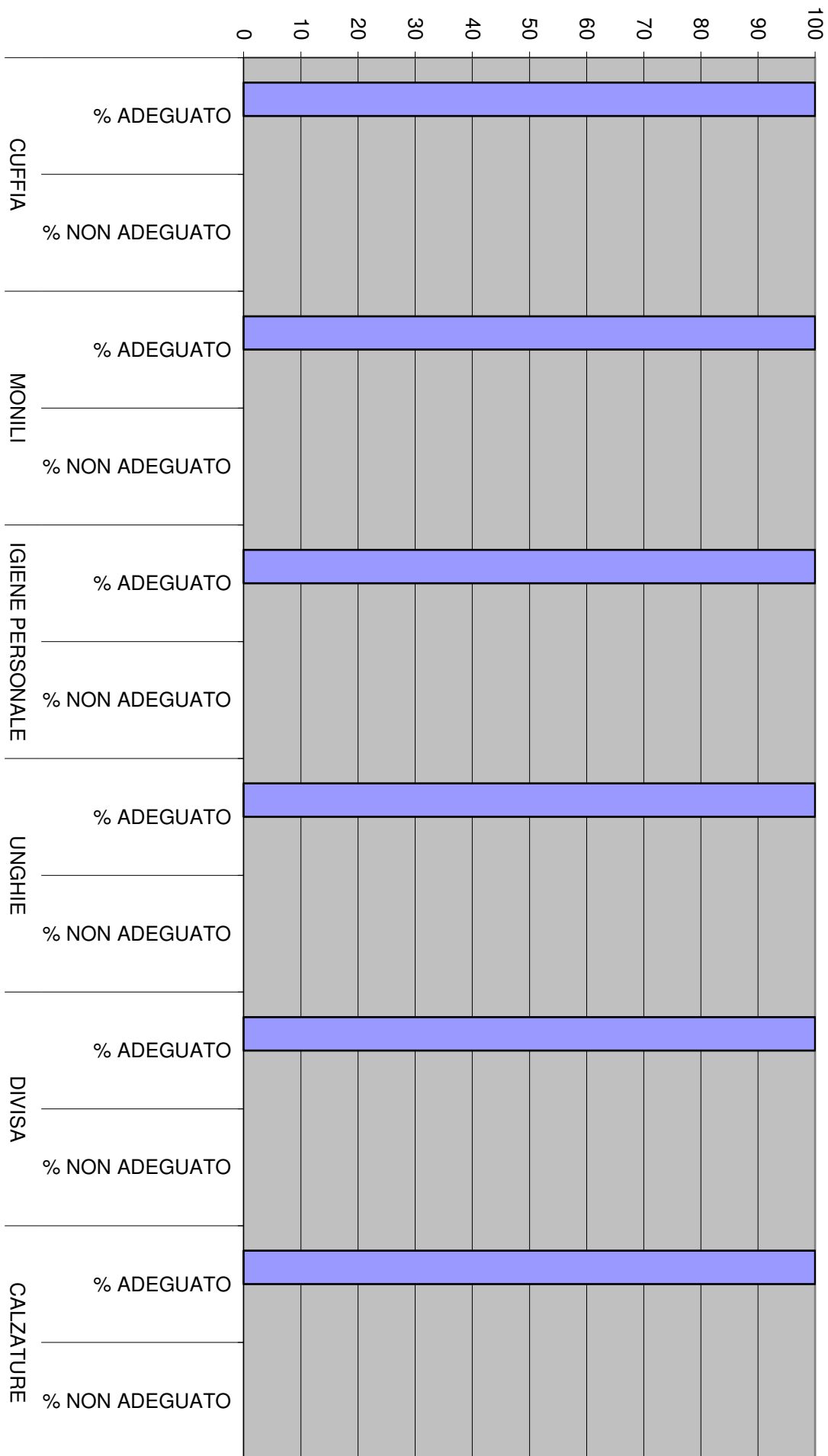


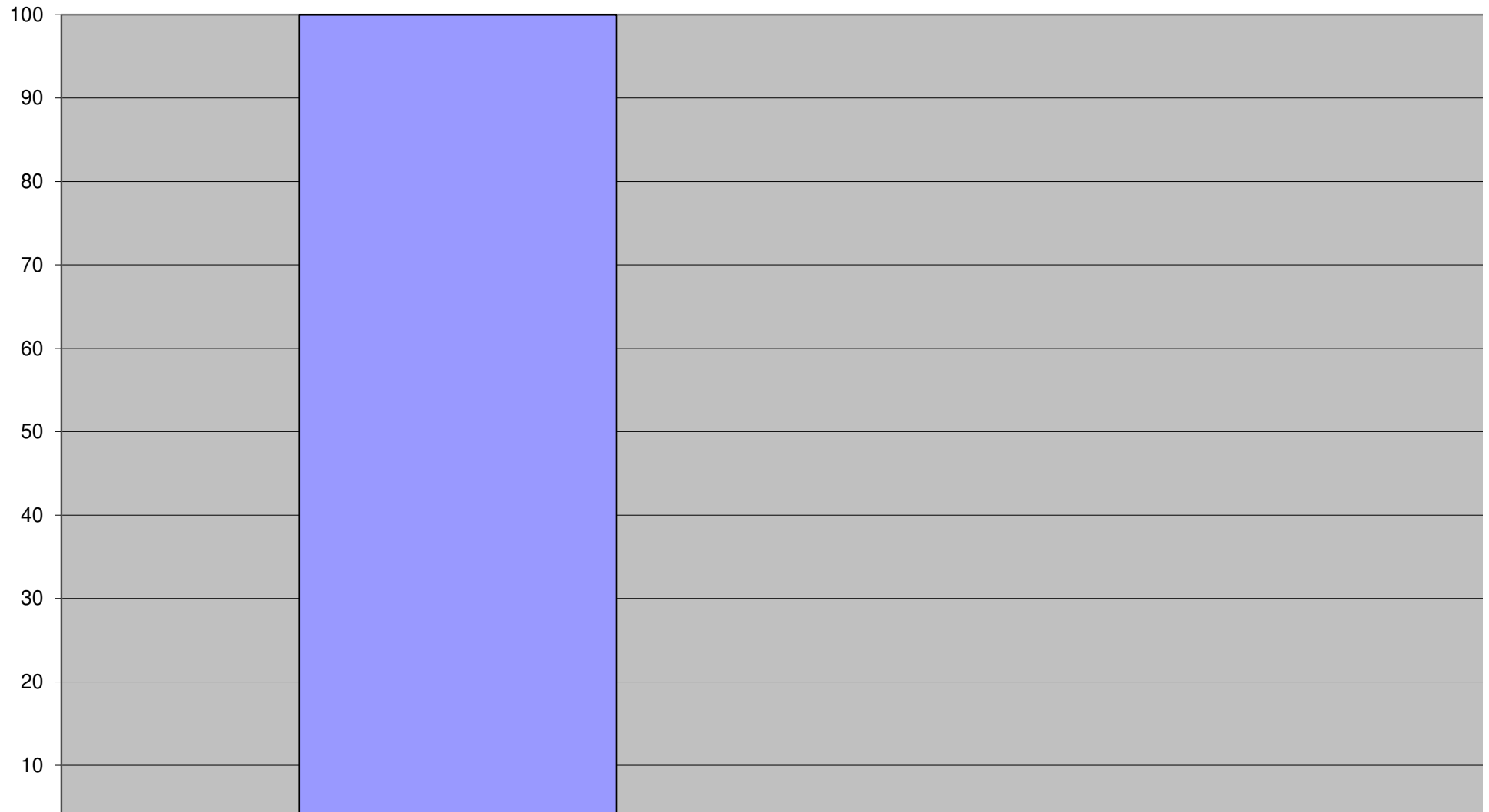
igiene



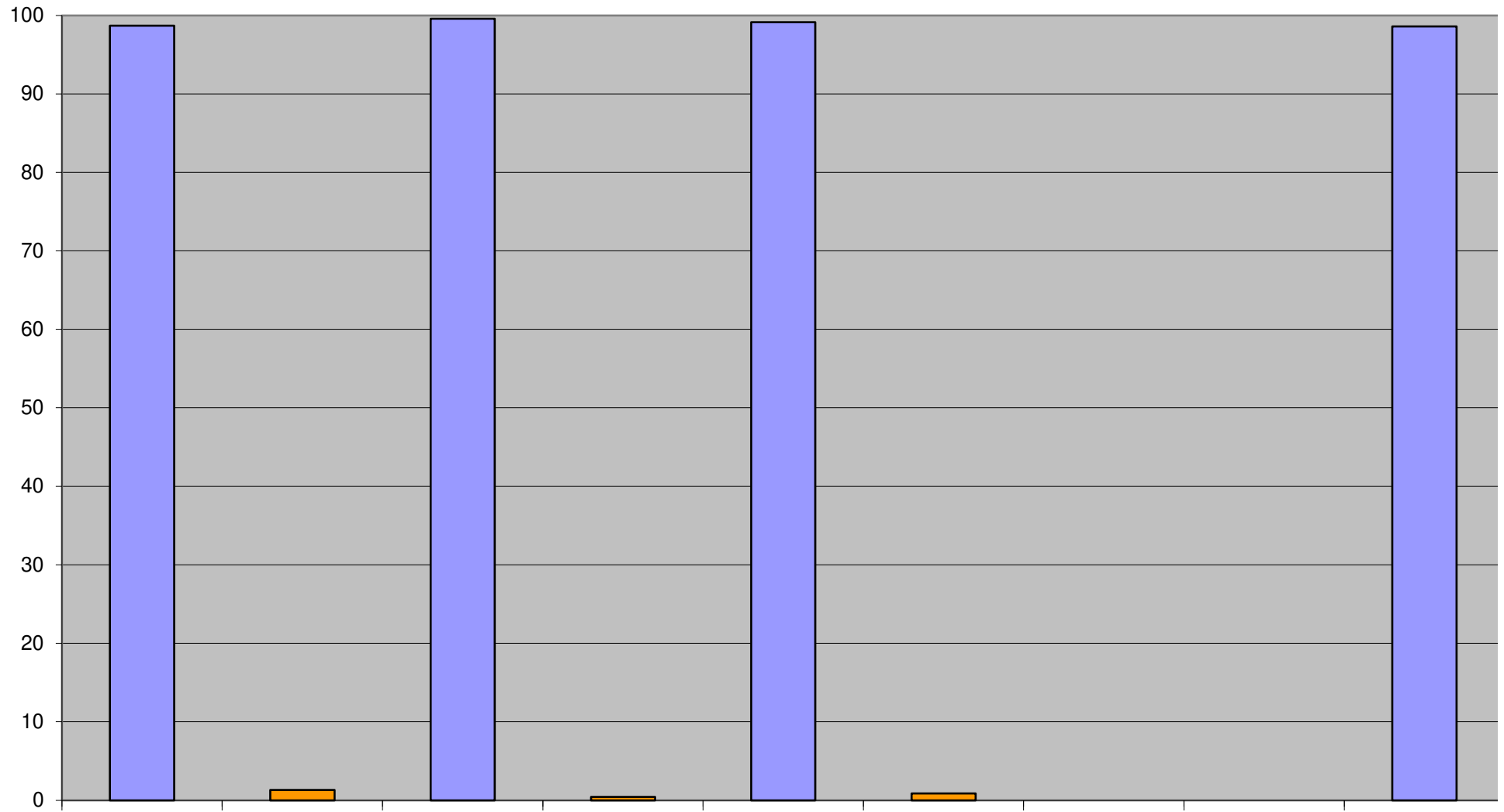


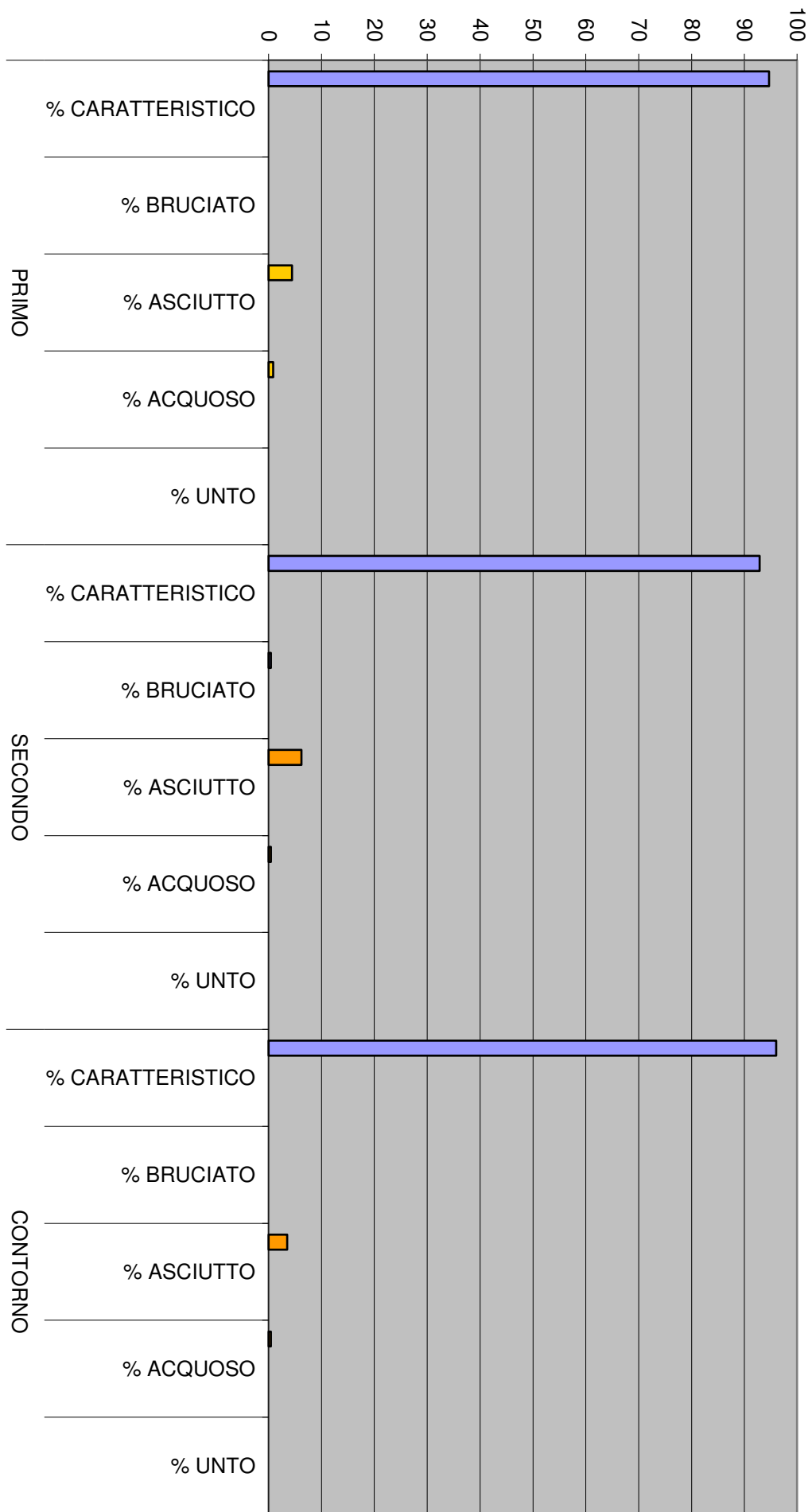
conformità personale

CONTENITORI



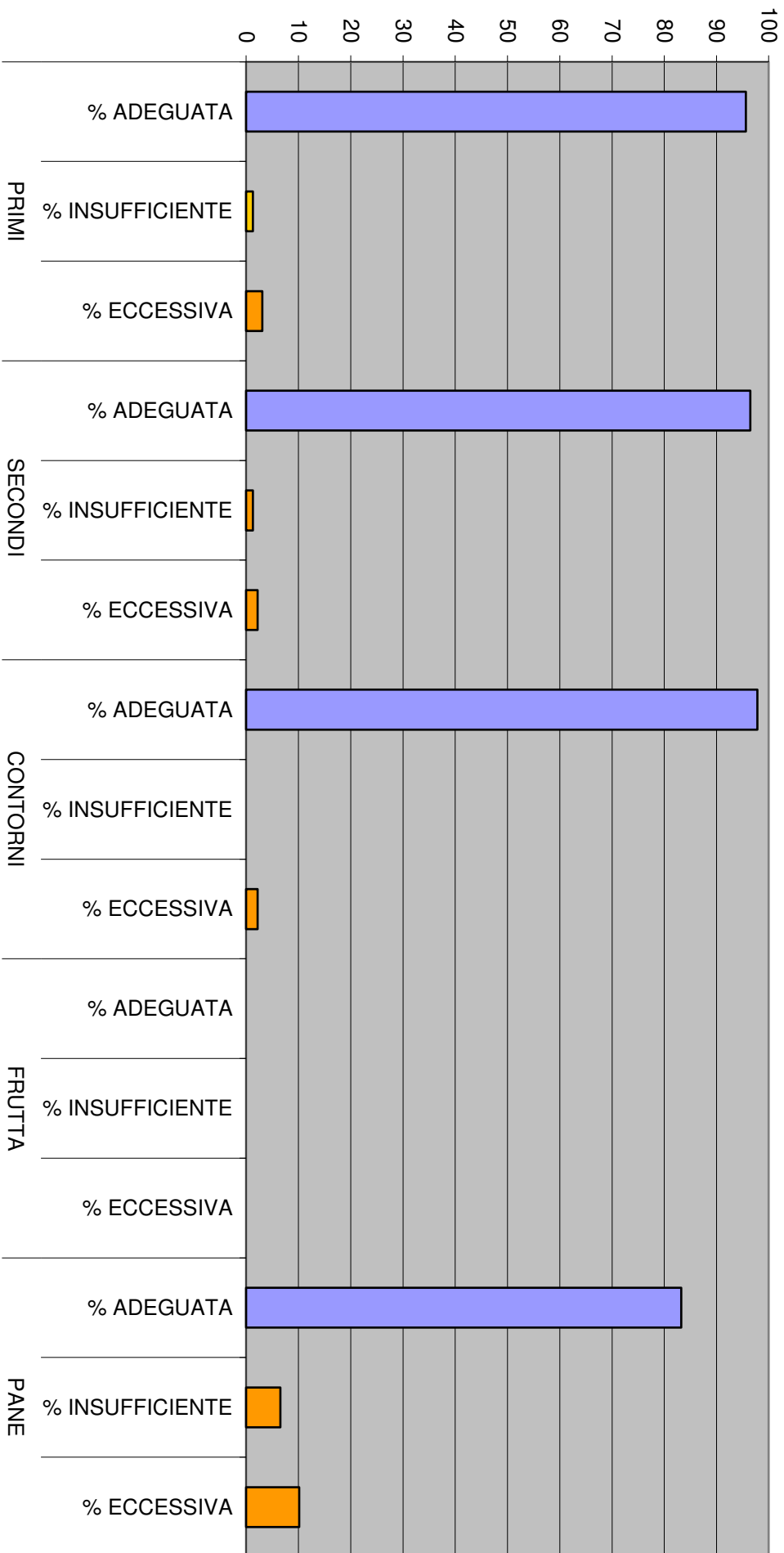
CONFORMITA' AL MENU



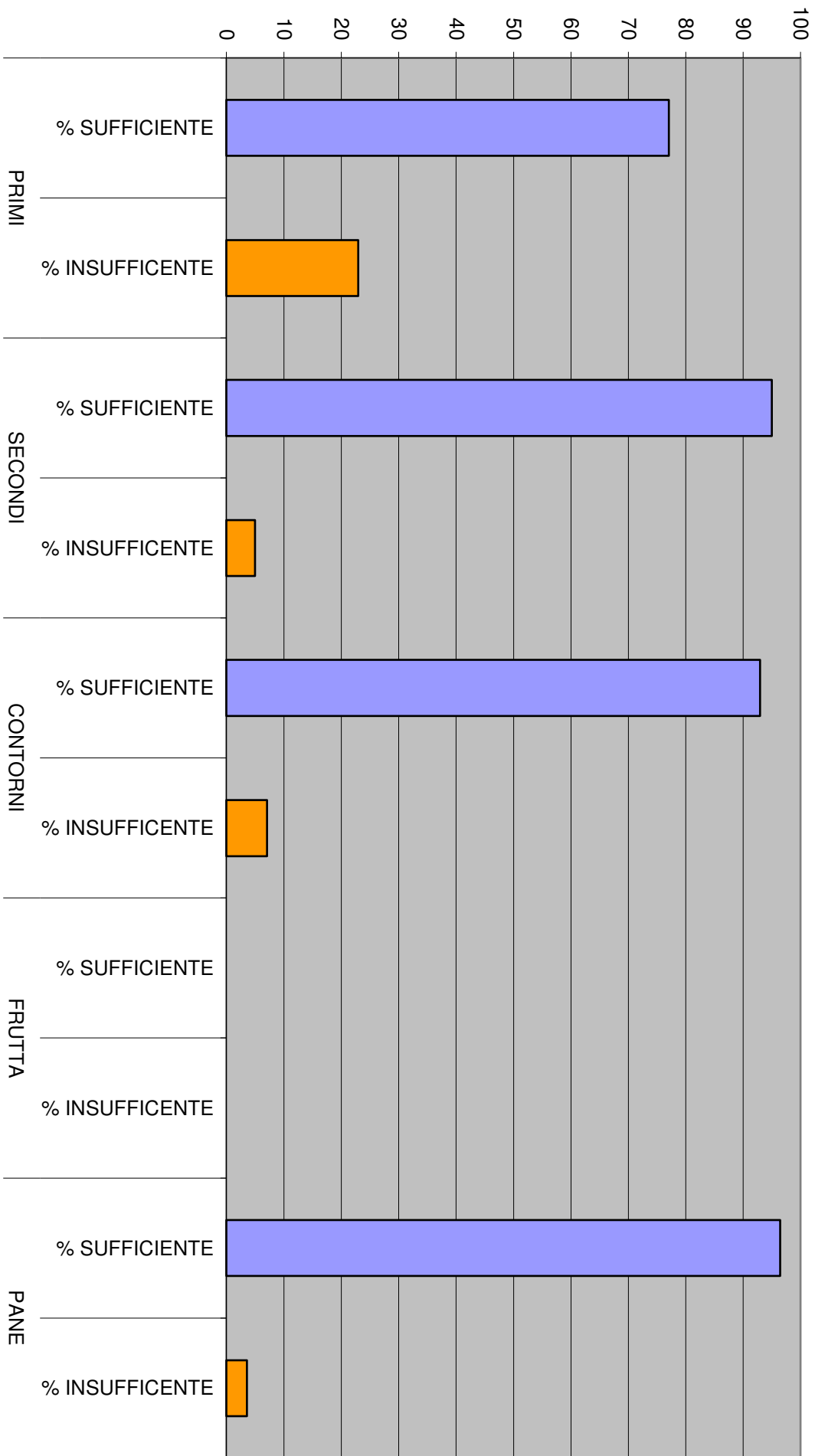


ASPETTO

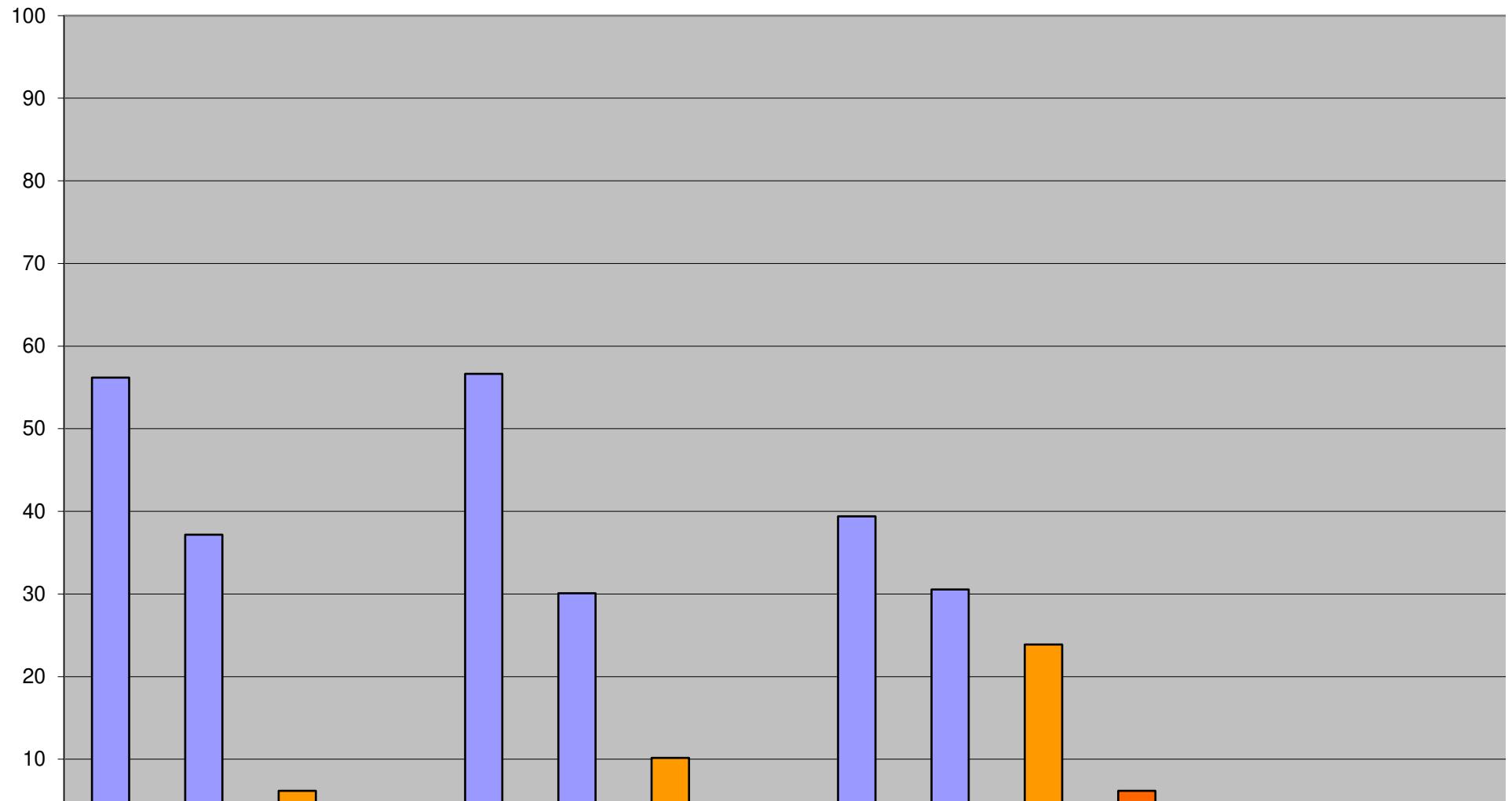
COTTURA E MATURAZIONE



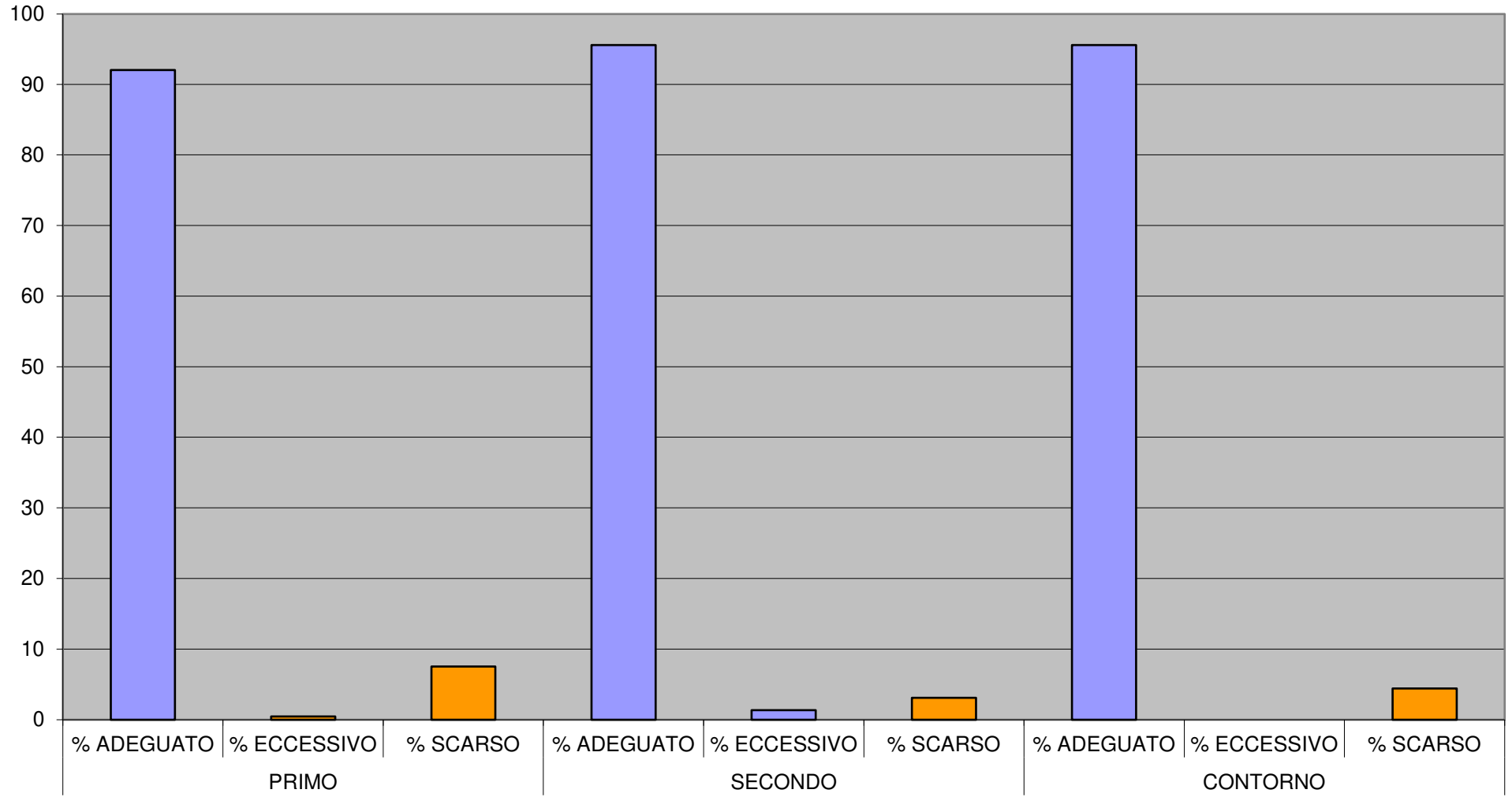
QUANTITA' PORZIONI



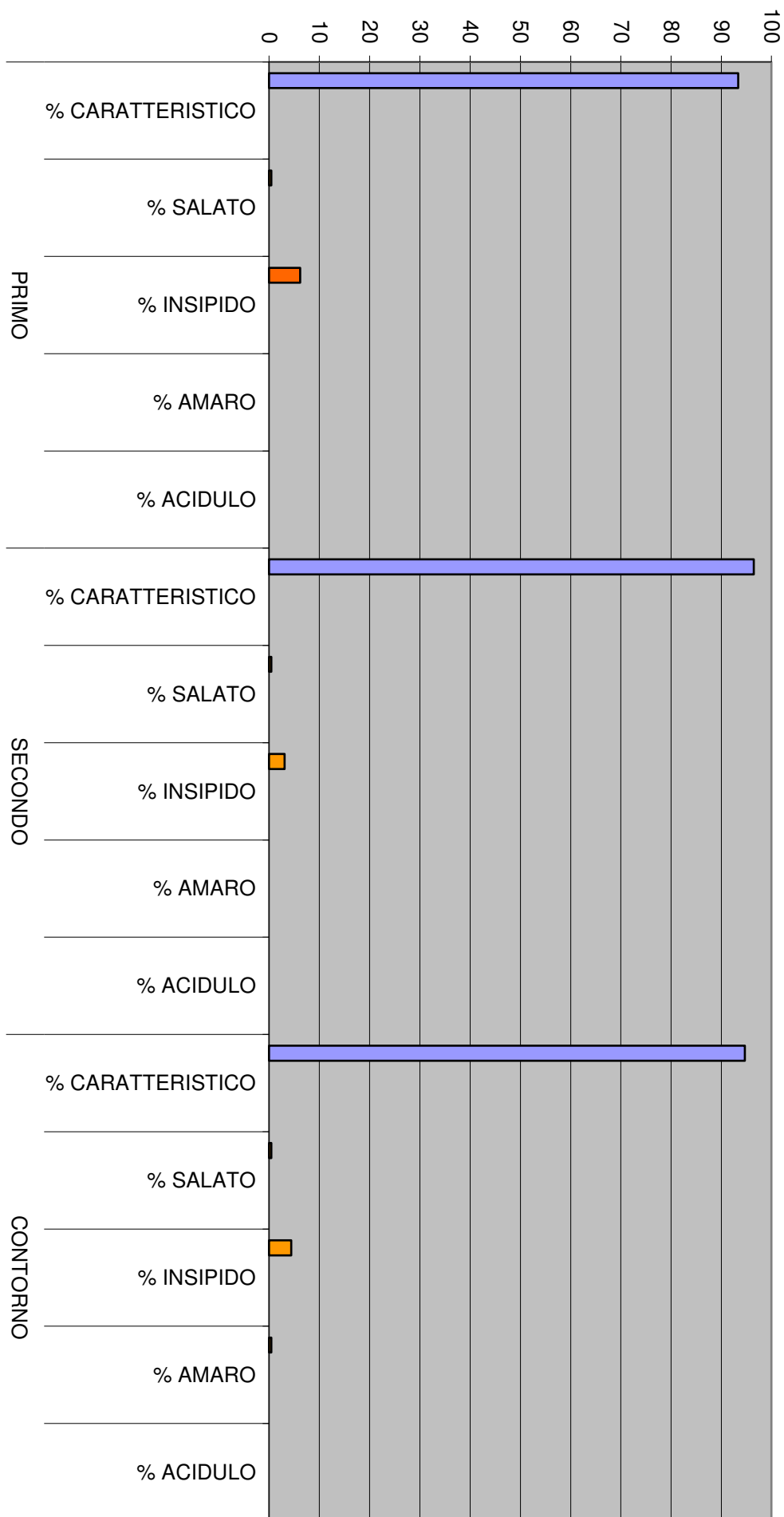
CONSUMO



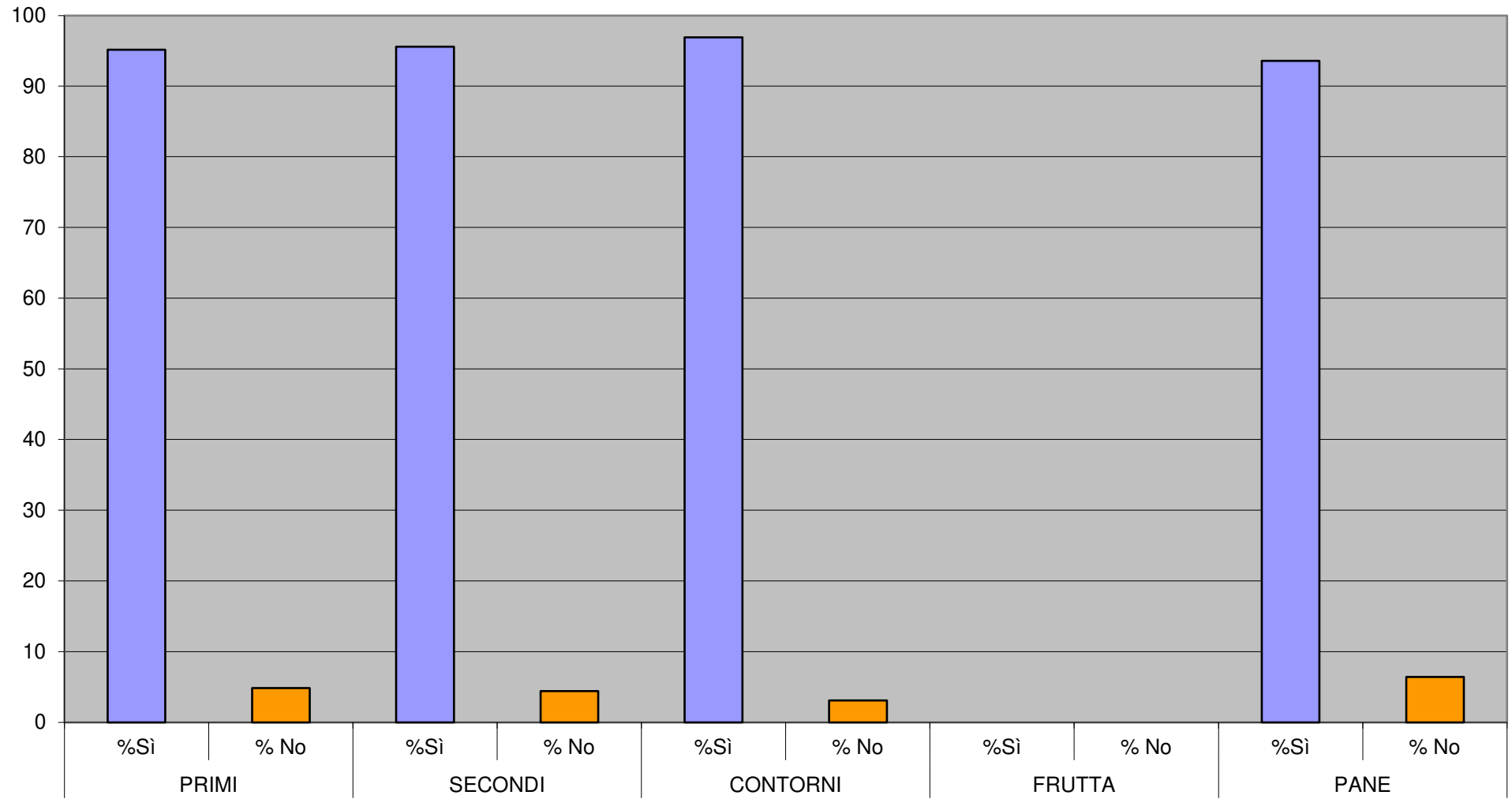
CONDIMENTO



GUSTO E SAPORE



DISPONIBILITA' FINO A FINE SERVIZIO



	giudizio positivo	giudizio negativo
giudizio complessivo refezione scolastica 2019/2020	9793	419
conformità cottura/maturazione	810	8
aspetto	794	51
disponibilità	638	37
consumo	781	37
quantità	697	118
pulizia	762	94
contenitori personali	986	1
condimenti	2194	0
	848	0
gusto e sapore	640	38
	643	35

